



# RAAC Rapid Response Accommodation

# Is your school affected by RAAC issues? We can help.

With over 100 UK schools still closed to pupils and staff due to the presence of reinforced aerated concrete (RAAC) and asbestos, solutions are needed quickly.

If you are a school or academy with RAAC in your buildings – or a contractor carrying out remediation works on behalf of an affected school – our temporary classrooms will help you minimise disruption to the teaching calendar.

We provide a tailored solution that meets your needs, including single/double classrooms, teaching blocks and even whole schools, all fully fitted out, connected and ready to go.

## **The Algeco RAAC dedicated response team is ready and waiting!**

We've put in place a dedicated RAAC response team to provide you with complete support from start to finish. It really couldn't be easier.

Over the last four decades of working with schools, we've earned a reputation for delivering value for money, and have flexible finance solutions available to help.

Whatever teaching space you need, our RAAC response team is ready and waiting to guide you every step of the way.



# Who We Are

We are Algeco, Europe's leading temporary accommodation brand.

## **Our purpose**

Together, we build sustainable futures.

## **60 years of hire solutions**

We've been helping schools and local authorities solve their temporary space challenges quickly, easily and cost-effectively for 60 years.

## **Algeco is part of the Modulaire Group**

Europe & Asia Pacific's leading business service company specialising in modular space.

 25 countries in Europe and Asia Pacific

 6,000 employees in 250 locations

 250,000 units with fleet net book value >\$3Bn



# Top Marks For Rapid Learning Accommodation

Algeco are trusted solutions advisors to education professionals and one of the longest established modular and offsite building solutions providers in the UK and Europe.



## One-Stop-Shop

Algeco offers everything from hiring a single storage unit to temporary multi-storey decant facilities and 1000-place permanent whole school campuses.



## Expertise

We have decades of design and project management experience, to deliver your building on time and on budget.



## Safer

Leading Health & Safety practices are employed on-site and off-site.



## Faster

Temporary facilities can be installed in weeks and permanent buildings delivered 50% faster than traditional build.



## Affordable

Whether you're hiring or buying, we offer flexible finance solutions to spread the costs.



## Sustainable

Re-usability, recyclability and energy efficiency are central to Algeco circular economic principles.

# Building shells or complete solutions – The choice is yours

## **Complete site set up through one point of contact**

Building structures are only part of Algeco hire solutions. Our one-stop-shop provides all the interior and exterior details of your temporary building hire, installed and ready to go.

## **Whole solutions, not just building shells**

Avoid juggling multiple suppliers, purchase orders and invoices. Arrange everything from fencing and furniture to fire safety equipment and white goods before your accommodation arrives.

We can even supply Wi-Fi data, display your branding on the outside of your building and keep consumables like hand sanitiser stocked up.

## **Make life easier**

Sourcing everything you need from one provider means you and your teams can get to work faster with less hassle. It also means you spend less time coordinating and communicating with suppliers, which results in fewer moving parts on-site.







Here's a selection of interior and exterior products and services we can include with your temporary accommodation.

- **Building Regulations Compliance**
- **Site Surveys**
- **Data Systems**
- **Fire & Intruder Alarms**
- **Climate Control Systems**
- **Ventilation Systems**
- **Renewable Technologies**
- **Design Services**
- **Building Management Systems**
- **Steps, Staircases & Ramps**
- **Access Control Systems**
- **Building Bulletins Compliance**
- **Wi-Fi Data**

# Learning Accommodation

With standard and pre-configured layouts, our learning accommodation can be tailored to your needs. We also offer flexible rental and purchase options.

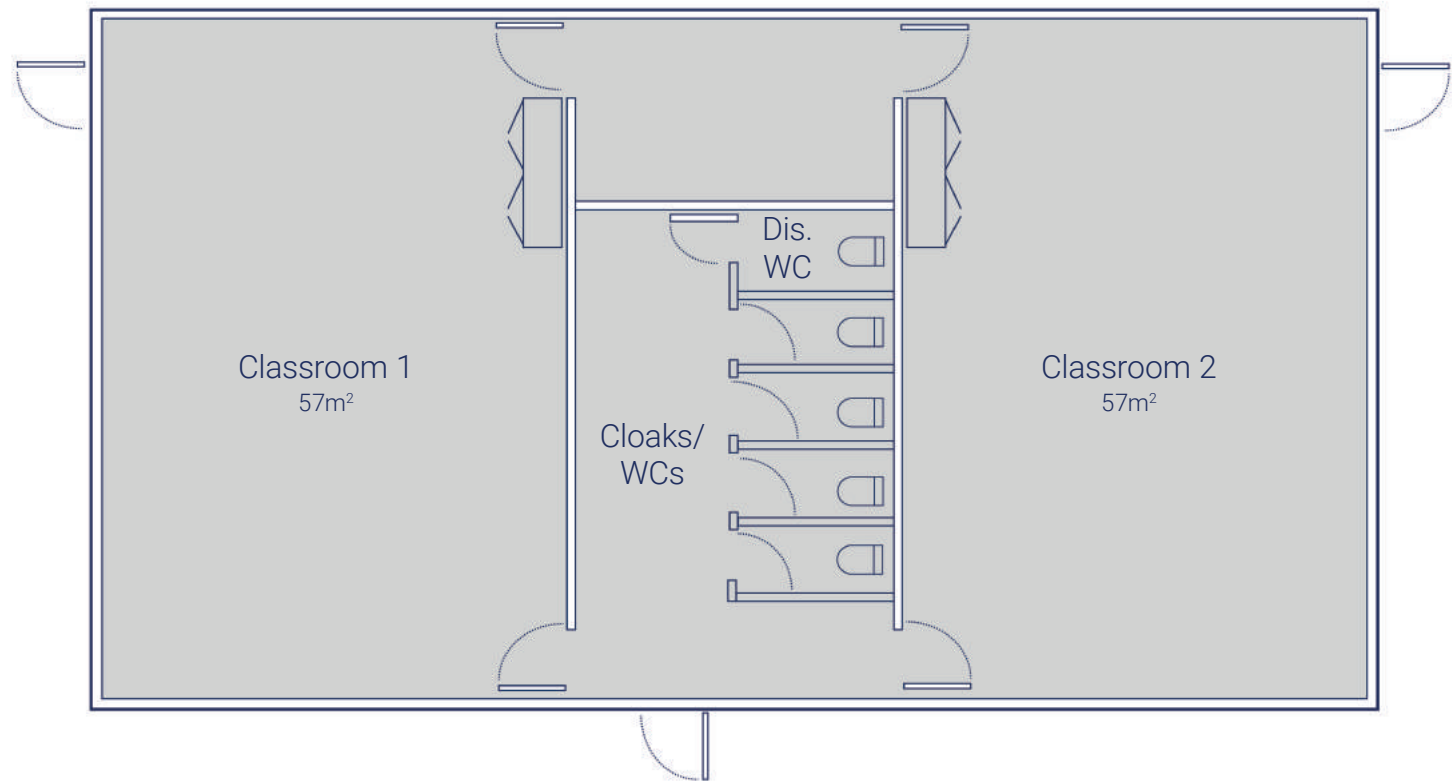
With a 2.5m internal ceiling height they are a light and airy solution. Offering you unparalleled flexibility with bespoke configurations possible and up to four-storey capability.

Our modules are all compliant with building regulations, DfE specifications and building bulletins and we have full turn-key solutions.



# Single/Double Classrooms

Layout example





# Case Study

Thameside School

**Location:** Essex

## The Challenge:

Algeco were commissioned by Thameside School in Essex to provide modular classroom accommodation, and installed the complete project within a 3 week timescale.

The requirement was for a single and double classroom building complete with toilets, using the Elliott Progress premium modular range.

## Our Solution:

Each classroom was provided with suspended ceilings throughout, high quality fittings and steel steps and ramps to access the buildings.

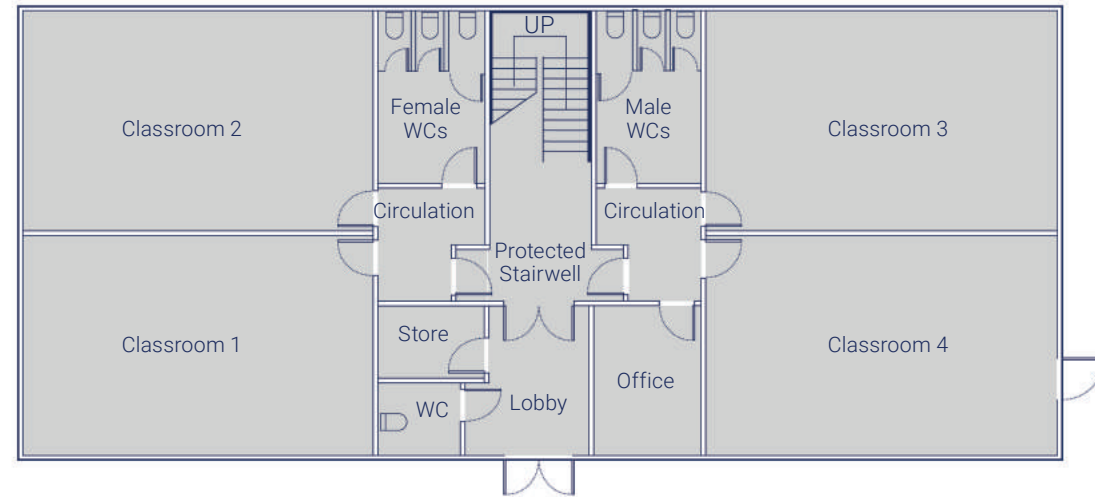
Algeco reacted in response to Thameside school's shortage of classroom space and completed the project on site within a 3 week window. Using stock units meant that Algeco could deliver and install the project with a much shorter lead time minimising impact on the existing school operations.



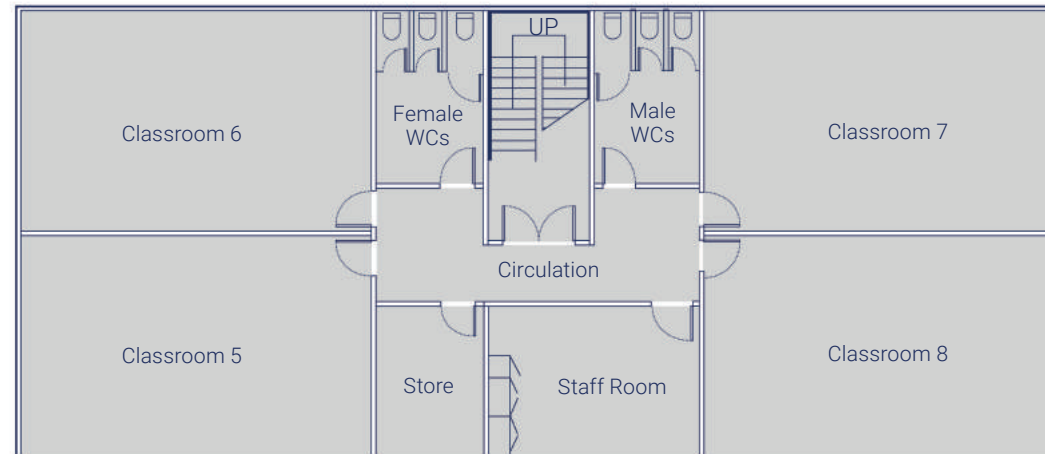
# Large Teaching Block

Layout example

Ground Floor



First Floor



# Case Study

Eden Leadership Academy

**Location:** Manchester

## The Challenge:

With Eden Leadership Academy still under construction, a temporary solution was required to house the full school while work was completed.

## Our Solution:

Over the summer period, we provided an 18 bay two-storey teaching block and a single storey 14 bay block. The two-storey building contained classrooms, laboratories, offices, kitchens and toilets. While the single storey module housed a large plan open canteen, meeting area, kitchen and toilets.

We were able to utilise existing buildings to offer the best layout without alternations, offering a cost-effective solution.





# Whole School Capabilities

Our modular, temporary buildings for hire can be combined in almost any configuration, offering a quick and efficient way to create high quality learning environments, whether you need a single classroom or an entire school.

By choosing to hire, you'll benefit from a learning environment that's there for as long as you need it, without using CapEx budgets. When you're finished with the buildings, they're simply taken away.

We have a whole range of options available, offering light and airy classrooms, with modules stackable up to four storeys high. Flexible, highly effective teaching spaces can be created to your exact requirements, and all classrooms are fully compliant with building regulations and DfE specifications.

There's no need to worry about managing the project, either. We'll provide support and guidance every step of the way, while our professional project management teams can be available out-of-hours and at weekends to ensure your project progresses as quickly as possible.

## Looking for a permanent build?

We can also provide you with your new school building through our Offsite Solutions division.



# Case Study

## Castlemead School

**Location:** Leicester

### The Challenge:

The Mead Educational Trust were scheduled to open a new School due to a need for extra capacity on the west side of Leicester city centre.

Algeco were commissioned by DfE., and their consultants Mott MacDonald, to undertake the turnkey package to design, install and open a temporary school whilst the process of the new permanent school was undertaken.

### Our Solution:

Within a six month window, Algeco were able to prepare the buildings to the agreed configuration, install a new sub-station and provide a new sewer and telephone connections required to operate the whole site.

The buildings were installed and commissioned complete with a fully functioning kitchen offering facilities to serve up to 200 persons per sitting. The site was complete resurfaced and marked out for traditional playground surfaces along with segregated access and parking.





# Public Sector Frameworks – Memberships

Using public sector framework agreements can make the modular buildings procurement process faster and easier. Algeco is a member of the major frameworks:



# Modular Buildings Project Management – Top Ten Tips



- 1. Lead times** – are typically 3 weeks for single/double classrooms – longer for larger buildings. If a supplier quotes lead times that sound too good to be true – they probably are!
- 2. Groundworks** – ensure full surveys are conducted and a reputable groundworks contractor is appointed as soon as possible. Delays to groundworks completion is a common cause of project delays.
- 3. Health & Safety on-site** – Safety is top priority – fencing and barriers should cordon areas of the site. Signage should highlight potential hazards and safety equipment requirements.
- 4. Transport movements & Cranage** – Modules are delivered on HGV trucks, and offloaded by a separate free-standing crane. Vehicle and crane movements are safety critical, so it's essential that pathways are unobstructed, large enough to accommodate the vehicles and non-essential staff and students kept well away. Movements must be supervised at all times.
- 5. Connection to services** – Electricity and water connections should be planned well in advance of module installation, to avoid unnecessary delays.
- 6. Equal access and SEN** – Public access buildings need to comply with Building Regulations Part M. Your modular building supplier should be able to provide ramps, steps, lifts and other features to ensure equal access.
- 7. Intruder and Fire alarms** – Your modular building supplier should offer a full range of alarm systems and fire protection equipment to deter break-ins and manage risk.
- 8. Don't forget the details** – Door finger-guards, non-slip flooring and window opening restrictors are commonly specified for educational environments.
- 9. Conserve energy** – Non-concussive taps and waterless urinals consume less water. LED lights with PIR sensors automatically turn off when not in use.
- 10. Building Handover** – Once the building is fully complete, it's best practice to hold a handover meeting with the major stakeholders – the client, the Principal Contractor and the modular building provider (if not the Principal Designer/Contractor), where the client is trained in basic operations and maintenance of the building.



# Priority RAAC Response Team

Email [raac@algeco.com](mailto:raac@algeco.com)



**Hire everything you  
need when you want it**

For more information please contact:

 0808 108 2222

 [algeco.co.uk](https://algeco.co.uk)

As part of our commitment to sustainability, this is a digitally-designed brochure.  
Please consider if you need to print it. Thank you.